

®

张家港市青辰雨机械有限公司

ZHANGJIAGANG QING CHEN YU MACHINERY CO.,LTD

Michael
sales@xjgmachine.com
M: +86 139-622-92-365

COMPANY PROFILE

1

- Best China plastic pipe welding machinery.
- The overall strength of China plastic pipe welding manufacturing top 3 companies.
- New high-tech enterprise
- Famous brand industry
- 6 s quality and management system
- CE and ISO9001:2000 quality standard
- Sales:6-8 million RMB

QING CHEN YU MACHINERY

Professional Plastic Pipe Welding



Founded in 2005 in Jiangsu, It has been for the development of Zhangjiagang. The total area of more than 300 mu.

- XJG has become one of the China's largest professional manufacturer of pipe welding machinery.

- With more than 5 sets of imported from South Korea, Japan's transfer, high precision machining centers, CNC machining equipment and advanced testing equipments;

- Annual output of more than 1500 sets of pipe welding machines, more than 15 countries and regions in the world;

QING CHEN YU MACHINERY

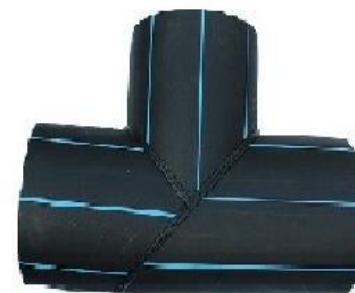
Professional Plastic Pipe Welding



Introduction part products of the company

2

- ◆ RHD Series Hydraulic HDPE pipe butt fusion machine
- ◆ RHJ Series Multi-Angle Pipe Fittings Welding Machine
- ◆ DJQ Series Multi-Angle Pipe Cutting Machine
- ◆ MRH Series Saddle Fusion Machine



RHD 系列 热熔对接焊机

RHD Series Hydraulic Butt Welding Machine

● 用途：

适用于在工地现场及车间将PE、PP、PVDF等塑料管材与管材、管材与管件热熔焊接。

● 特点：

1. 整机由机架，铣刀，电热板和提篮（电热板和铣刀支架）四部分构成。
2. 电热板表面采用聚四氟乙烯涂层。独立温控系统。
3. 采用电动铣削方式，具有单、双面铣削功能。铣刀片选用优质工具钢，双刀刃设计、可调换双面使用。
4. 低启动压力，使焊接小口径管材更为可靠。
5. 机架主要部分为铝合金材料，结构简单，小巧，操作方便
6. 渗热和冷却阶段有两个独立独立渠道的计时器。
7. 高精度的防震压力表显示更精确的读数。

Application:

Suitable for butt fusion welding of plastic pipes and fittings made of PE,PP, and PVDF in construction site or workshop.

Features:

1. consists of basic frame, heating plate, planing tool, and support (for planing tool & heating plate).
2. Removable PTFE coated heating plate with separate temperature control system.
3. Electric milling cutter with reversible double cutting edge blades.
4. Low starting pressure ensures reliable welding quality of small pipes.
5. It is made of lightweight and high strength material; simple structure and easy to operate.
6. Separate two-channel timer shows time in soaking and cooling phases.
7. High-accurate and shockproof pressure meter indicates clearer reading.

QING CHEN YU MACHINERY

Professional Plastic Pipe Welding

● 可选配件:

短法兰焊接专用夹具
焊接数据记录仪

Optional parts:

Stub end device for short flange
Data Logger



● 主要技术参数 Technical Specification

规格型号	Model	RHD 160	RHD 250	RHD 315
焊机范围	Welding range(mm)	63、75、90、110、125、140、160	110、125、140、160、180、200、225、250	160、180、200、225、250、280、315
加热板最高温度	Heating Plate Max. Temp	270℃	270℃	270℃
加热板表面温差	Temp. Deviation in surface	<±5°	<±5°	<±5°
工作电压	Working voltage	220V, 50Hz	220V, 50Hz	220V, 50Hz
加热板功率	Heating Plate Power	1.0 KW	2.1 KW	3.1 KW
铣刀功率	Planing Tool Power (KW)	0.7 KW	1.1 KW	1.1 KW
液压站功率	Heating Plate Power (KW)	0.75 KW	0.75 KW	0.75 KW
总功率	Total Power (KW)	2.45 KW	3.95 KW	4.95 KW
重量	Weight (KGS)	107 KGS	143 KGS	205 KGS
机架尺寸	Basic Frame Dimension (L*W*H)	970×505×490 mm	995×600×555 mm	1075×695×710 mm
提篮尺寸	Support Dimension (L*W*H)	525×525×570 mm	610×590×670 mm	800×655×760 mm
液压站尺寸	Hydraulic unit Dimension (L*W*H)	690×490×540 mm	690×490×540 mm	685×495×545 mm



RHD系列 热熔对接焊机

RHD Series Hydraulic Butt Welding Machine

● 特点:

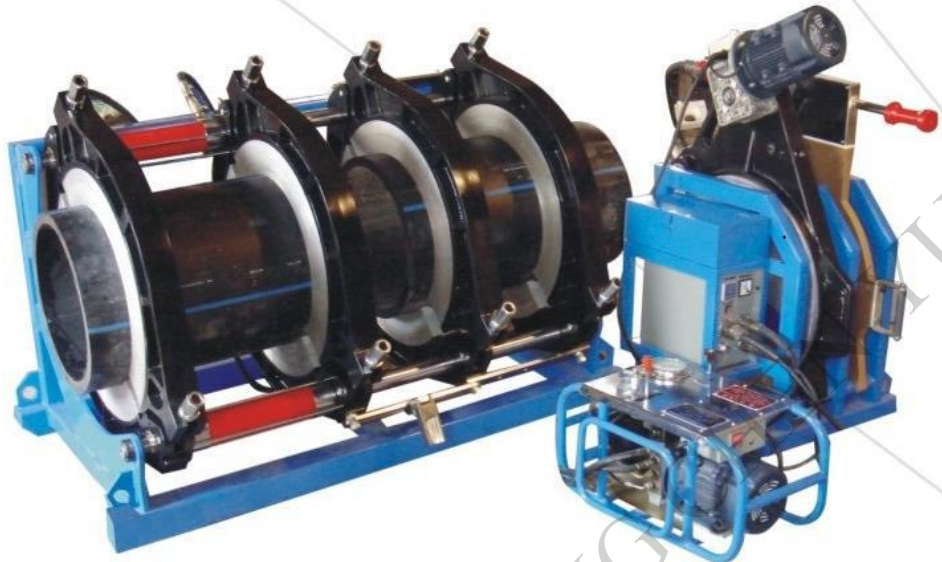
1. 整机由机架，铣刀，电热板和提篮（电热板和铣刀支架）四部分构成。
2. 电热板表面采用聚四氟乙烯涂层。独立温控系统。
3. 采用电动铣削方式，具有单、双面铣削功能。铣刀片选用优质工具钢，双刀刃设计、可调换双面使用。
4. 低启动压力，使焊接小口径管材更为可靠。
5. 机架主要部分为铝合金材料，结构简单，小巧，操作方便。
6. 渗热和冷却阶段有两个独立独立渠道的计时器。
7. 高精度的防震压力表显示更精确的读数。
8. 配置快速，省力的加热板、铣刀升降机。

Features:

1. consists of basic frame, heating plate, planing tool, and support (for planing tool & heating plate).
2. Removable PTFE coated heating plate with separate temperature control system.
3. Electric milling cutter with reversible double cutting edge blades.
4. Low starting pressure ensures reliable welding quality of small pipes.
5. It is made of lightweight and high strength material; simple structure and easy to operate.
6. Separate two-channel timer shows time in soaking and cooling phases.
7. High-accurate and shockproof pressure meter indicates clearer reading.
8. Labor Saving and high efficient crane is available to lift planing tool and heating plate.

QING CHEN YU MACHINERY

Professional Plastic Pipe Welding



RHD450 RHD500



RHD630



RHD系列 热熔对接焊机 RHD Series Hydraulic Butt Welding Machine

● 主要技术参数 Technical Specification

规格型号	Model	RHD450	RHD500	RHD630
焊机范围	Welding range(mm)	280、315、355、400、450	315、355、400、450、500	400、450、500、560、630
加热板最高温度	Heating Plate Max. Temp	270℃	270℃	270℃
加热板表面温差	Temp. Deviation in surface	<±7°	<±7°	<±7°
工作电压	Working voltage	380V , 50Hz	380V , 50Hz	380V , 50Hz
加热板功率	Heating Plate Power (KW)	5.2 KW	5.4 KW	9.2 KW
铣刀功率	Planing Tool Power (KW)	1.5 KW	1.5 KW	1.5 KW
液压站功率	Hydraulic unit Power (KW)	1.5 KW	1.5 KW	1.5 KW
总功率	Total Power (KW)	8.2 KW	8.4 KW	12.2 KW
重量	Weight (KGS)	376 KGS	439KGS	640 KGS
机架尺寸	Basic Frame Dimension (L*W*H*)	1485 × 905 × 1065 mm	1590 × 920 × 1070 mm	1650 × 1150 × 1280 mm
提篮尺寸	Support Dimension (L*W*H*)	1000 × 725 × 1350 mm	1020 × 770 × 1410 mm	1155 × 850 × 1470 mm
液压站尺寸	Hydraulic unit Dimension (L*W*H*)	755 × 505 × 660 mm	770 × 530 × 540 mm	755 × 505 × 660 mm



RHD800 RHD1000
RHD1200 RHD1600

RHD系列 热熔对接焊机 RHD Series Hydraulic Butt Welding Machine

● 用途:

适用于在工地现场及车间将PE、PP、PVDF等塑料管材与管材、管材与管件热熔焊接。

Application:

Suitable for butt fusion welding of plastic pipes and fittings made of PE, PP, and PVDF in construction site or workshop.

● 可选配件:

短法兰焊接专用夹具
焊接数据记录仪
吊杆及电动葫芦

Optional Parts:

Stub End Device for flange stub
Data logger
Electric Crane and Hoist

RHD系列 热熔对接焊机

RHD Series Hydraulic Butt Welding Machine

● 主要技术参数 Technical Specification

规格型号	Model	RHD800	RHD1000	RHD1200	RHD1600
焊机范围	Welding ranges (mm)	630、710、800	710、800、900、1000	800、900、1000、1200	1200、1400、1600
加热板最高温度	Heating Plate Max. Temp.	270°C	270°C	270°C	270°C
加热板表面温差	Temp. Deviation in surface	<±7°	<±7°	<±7°	<±7°
工作电压	Working voltage	380V ,50Hz	380V ,50Hz	380V ,50Hz	380V ,50Hz
加热板功率	Heating Plate Power	12.5 KW	18KW	29.2KW	30KW
铣刀功率	Planing Tool Power	1.5 KW	3 KW	3 KW	4 KW
液压站功率	Hydraulic unit Power	1.5 KW	2.2 KW	3 KW	4 KW
电动葫芦功率	Electric Crane Power	0.5KW	0.5KW	1 KW	1 KW
总功率	Total Power	16 KW	23.7 KW	36.2 KW	39KW
重量	Weight	1260 KGS	1820KGS	3596 KGS	5960KGS
机架尺寸	Basic Frame Dimension	2150×1545×1625	2520×1810×1680	2900×2100×2030	3500×2200×2150
提篮尺寸(mm)	Support Dimension	1400×850×1765	1360×1000×1800	1700×1200×2200	1800×1150×1820
液压站尺寸(mm)	Hydraulic unit Dimension	900×550×620	800×470×600	860×510×660	2480×1800×380
吊臂尺寸(mm)	Hoist Dimension	2570×635×420	2490×620×560	3100×600×450	4050×450×610 2630×450×500
电葫芦尺寸(mm)	Electric crane	730×460×450	730×460×450	530×360×400	800×500×450

RHJ 系列 多角度管件焊机
RHJ Series Multi-angle Fitting Welding Machine



• 选配部件:

短法兰焊接专用夹具
短管件焊接专用夹具
45°、60°Y型三通焊接夹具

Optional Parts:

Special clamps for welding flange stub
Special clamps for short spigot fitting
Special clamps for welding Y shape (45° and 60°) fittings



• 用途:

适用于在车间制作PE、PP、PVDF等弯头、等径三通、等径四通；45°、60° Y型三通；加长注塑管件、制作管件组合体、弯管与直管等管件的焊接。

Application:

Suitable for fabricating elbow, tee, cross and Y shape (45° and 60°) fittings of PE、PP、PVDF in workshop. Also used to lengthen the injection moulded fitting, make integrated fitting and weld straight pipe and fitting and so on.

RHJ系列 多角度管件焊机
RHJ Series Multi-angle Fitting Welding Machine

● 主要技术参数 Technical Specification

规格型号	Model	RHJ 315	RHJ 450	RHJ 630
焊机范围	Welding range(mm)	110、125、140、160、180、200、225、250、280、315	250、280、315、355、400、450	355、400、450、500、560、630
焊接类型	Welding Type	0~90° 弯头、正三通、正四通、45°、60°Y型正三通、斜三通 (需增加可选择部件) 0~90°Elbow、tee、cross. 45°and 60°Y shape (optional parts should be used)		
加热板最高温度	Heating Plate Max. Temp	270°C	270°C	270°C
加热板表面温差	Temp. Deviation in surface	<±7°	<±7°	<±7°
工作电压	Working voltage	380V, 50Hz	380V, 50Hz	380V, 50Hz
加热板功率	Heating Plate Power	5.25 KW	12 KW	22 KW
铣刀功率	Planing Tool Power	1.5 KW	2.2 KW	2.2 KW
液压站功率	Hydraulic unit Power	0.75 KW	4 KW	4 KW
总功率	Hydraulic unit Power	7.5 KW	18.2 KW	28.2 KW
重量	Total Weight(Exclude optional parts)	848KGS	2900KGS	4470KGS

QING CHEN YU MACHINERY

Professional Plastic Pipe Welding

RHJ系列 多角度管件焊机
RHJ Series Multi-angle Fitting Welding Machine



RHJ系列 多角度管件焊机

RHJ Series Multi-angle Fitting Welding Machine

● 用途:

适用于在车间制作PE、PP、PVDF等弯头、等径三通、等径四通；45°、60° Y型三通；加长注塑管件、制作管件组合体、弯管与直管等管件的焊接。

Application:

Suitable for fabricating elbow, tee, cross and Y shape (45° and 60°) fittings of PE, PP, PVDF in workshop. Also used to lengthen the injection moulded fitting, make integrated fitting and weld straight pipe and fitting and so on.

● 选配部件:

短法兰焊接专用夹具

短管件焊接专用夹具

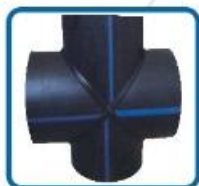
45°、60° Y型三通焊接夹具

Optional Parts:

Special clamps for welding flange stub

Special clamps for short spigot fitting

Special clamps for welding Y shape (45° and 60°) fittings



RHJ系列 多角度管件焊机
RHJ Series Multi-angle Fitting Welding Machine

● 主要技术参数 Technical Specification

规格型号	Model	RHJ 800	RHJ 1000	RHJ 1200
焊机范围	Welding range(mm)	500、560、630、 710、800	710、800、900、 1000	800、900、1000、 1200
焊接类型	Welding Type	0~90° 弯头、正三通、正四通、45°、60°Y型正三通、斜三通 (需增加可选择部件) 0~90° Elbow、tee、cross. 45° and 60° Y shape (optional parts should be used)		
加热板最高温度	Heating Plate Max. Temp	270℃	270℃	270℃
加热板表面温差	Temp. Deviation in surface	<±7°	<±7°	<±7°
工作电压	Working voltage	380V, 50Hz	380V, 50Hz	380V, 50Hz
加热板功率	Heating Plate Power	40 KW	60KW	62KW
铣刀功率	Planing Tool Power	3KW	4 KW	5.5KW
液压站功率	Hydraulic unit Power	4 KW	5.5KW	7.5KW
总功率	Hydraulic unit Power	47 KW	69.5KW	75KW
重量	Total Weight(Exclude optional parts)	4900KGS	15000KGS	18000KGS

QING CHEN YU MACHINERY

Professional Plastic Pipe Welding

MRH系列 马鞍型管件焊接机
MRH Series Saddle Fusion Machine



MRH系列 马鞍型管件焊接机 MRH Series Saddle Fusion Machine

● 用途及特点：

1. 适用于在车间制作聚乙烯异径三通管件。
2. 一体化结构设计，集焊接、开孔于一体，一次性完成管件制作。
3. 加热板独立温控系统，聚四氟乙烯表面涂层。
4. 低启动压力，高可靠性密封结构。
5. 独立的双通道计时器，可记录吸热和冷却两个时间段，计时结束报警，方便使用者。
6. 大表盘、高精度防震压力，表读数更清晰。
7. 加热板、托板采用直线导轨。
8. 产品按照98/37/EC及73/23/EEC标准设计。

Application and features:

1. Suitable for fabricating PE reducing tee in a workshop.
2. Integrated function of welding and taping enables it can complete the whole fabricating process.
3. Removable PTFE coated heating plate.
4. Separate two-channel timer records times in soaking and cooling phases.
5. Digital high-accurate pressure meter indicates clearer readings.
6. Linear guide ways are equipped with heating plate.
7. planing tool and dragging plate.
8. Our product design by 98/37/EC and 73/23/EEC standard.

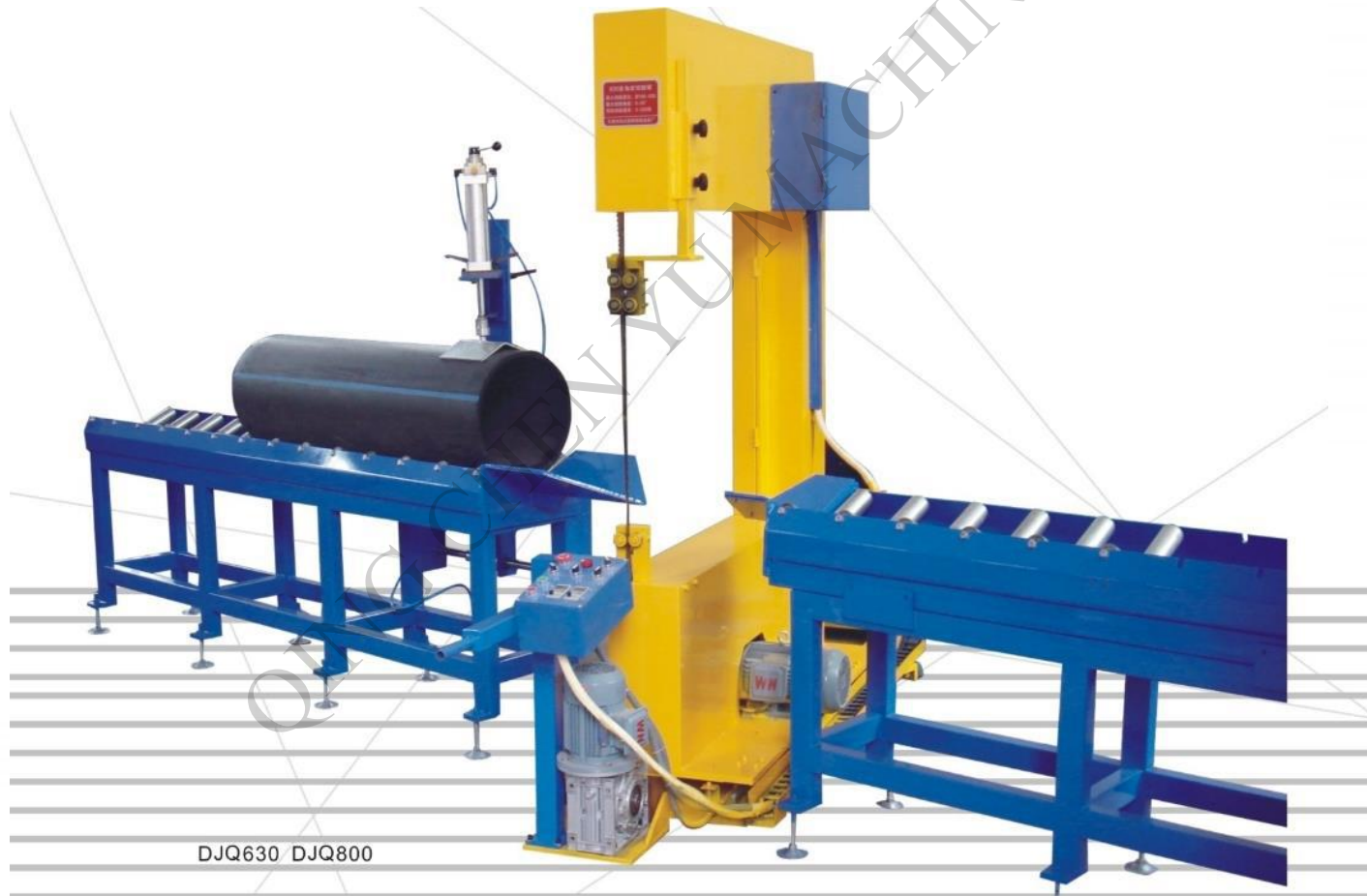
● 配置表

规格型号 Model	MRH630							
支管 Branch pipe	主管 Main pipe	315	355	400	450	500	560	630
63	315/63	355/63						
90	315/90	355/90	400/90					
110	315/110	355/110	400/110	450/110				
160	315/160	355/160	400/160	450/160	500/160	560/160		
200			400/200	450/200	500/200	560/200	630/200	
225				450/225	500/225	560/225	630/225	
250					500/250	560/250	630/250	
315								630/315

QING CHEN YU MACHINERY

Professional Plastic Pipe Welding

DJQ系列 多角度切割机
DJQ Series Multi-angle Cutting Machine



DJQ630 DJQ800

DJQ系列 多角度切割机 DJQ Series Multi-angle Cutting Machine

● 主要技术参数 Technical Specification

型号规格	Model	DJQ630	DJQ800	DJQ1200	DJQ1600
最大切割范围	Maximum range	630mm	800mm	1200mm	1600mm
切割角度	Cutting angles	0° ~ 67.5°	0° ~ 67.5°	0° ~ 67.5°	0° ~ 67.5°
锯条最高线速度	Max. line speed	250m/min	250m/min	250m/min	250m/min
工作电压	Working voltage	380V, 50Hz	380V, 50Hz	380V, 50Hz	380V, 50Hz
驱动电机	Drive motor	3KW	3KW	2.2 KW	3 KW
切割电机	Cutting motor	0.75 KW	1.5 KW	2.2 KW	2.2KW
总功率	Total Power	3.75 KW	4.5KW	4.4 KW	5.2 KW
重量	Weight	1480 KGS	2000 KGS	6500 KGS	6800 KGS

QING CHEN YU MACHINERY

Professional Plastic Pipe Welding



Project in Germany

QING CHEN YU MACHINERY

Professional Plastic Pipe Welding



Project in Thailand

QING CHEN YU MACHINERY

Professional Plastic Pipe Welding



Project in Poland

QING CHEN YU MACHINERY

Professional Plastic Pipe Welding



Project in Dubai

Work-Shop



Work-Shop



QING CHEN YU MACHINERY

Professional Plastic Pipe Welding

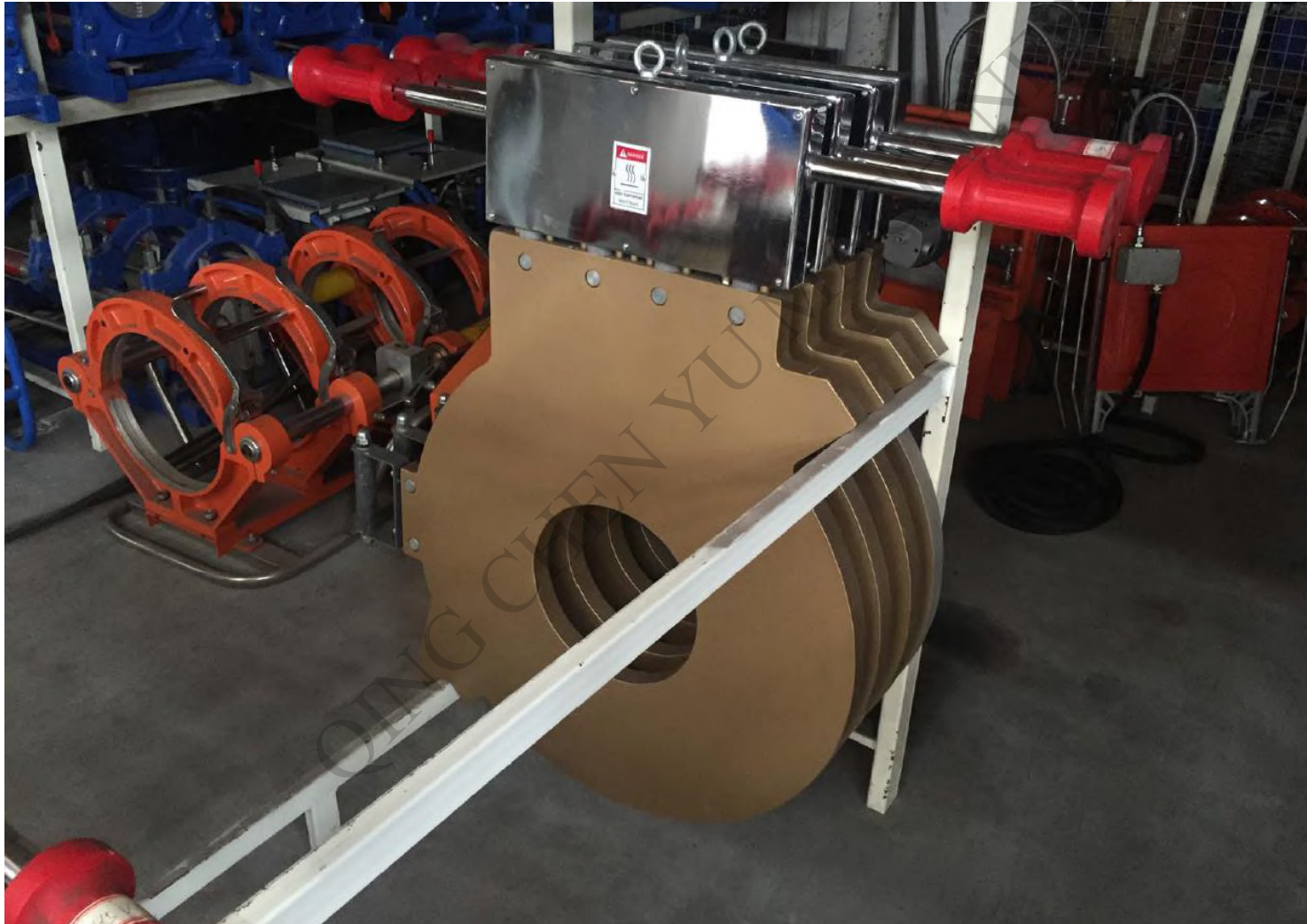
Work-Shop



QING CHEN YU MACHINERY

Professional Plastic Pipe Welding

Work-Shop



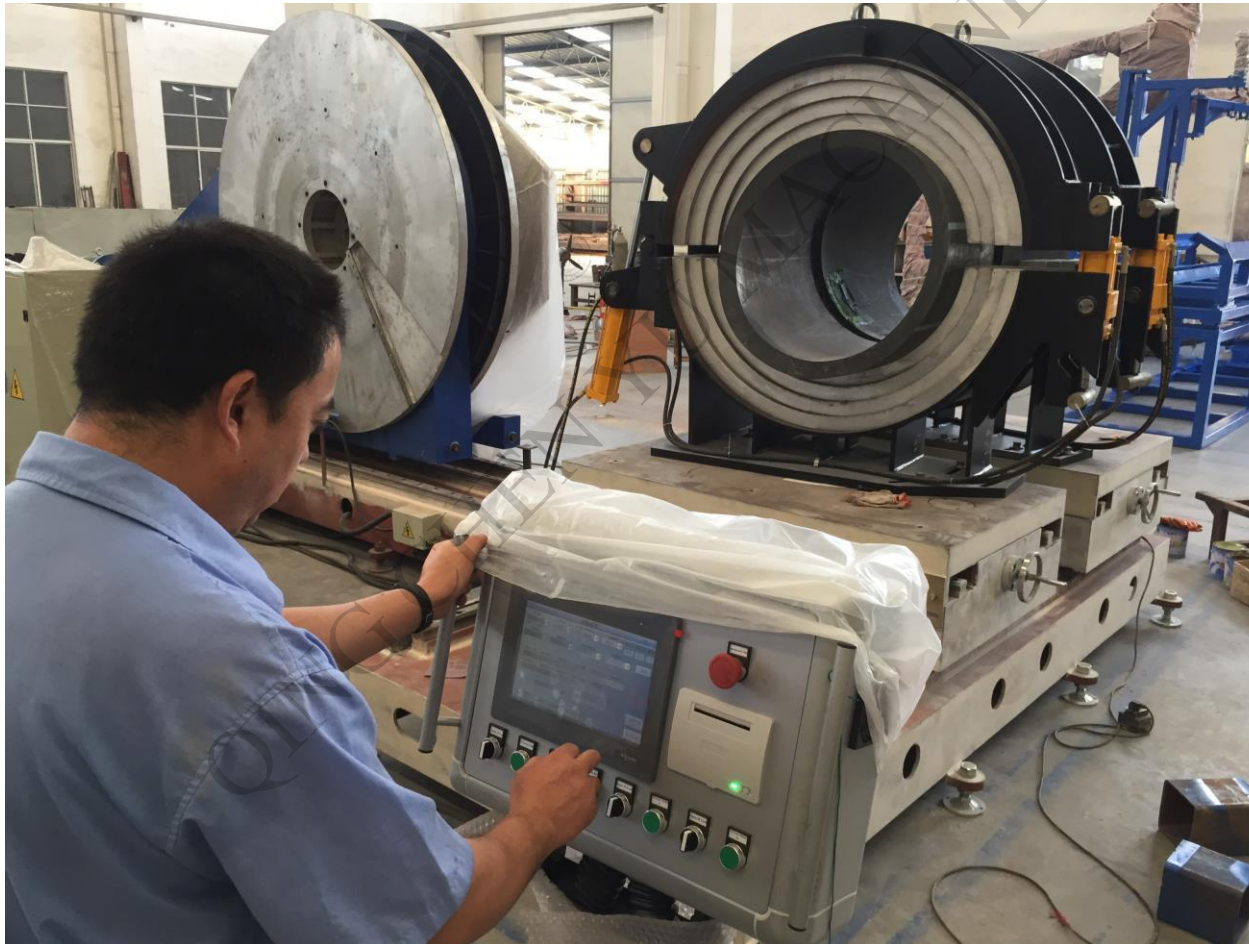
QING CHEN YU MACHINERY

Professional Plastic Pipe Welding

Work-Shop



Testing Machine



QING CHEN YU MACHINERY

Professional Plastic Pipe Welding

Some typical customer:

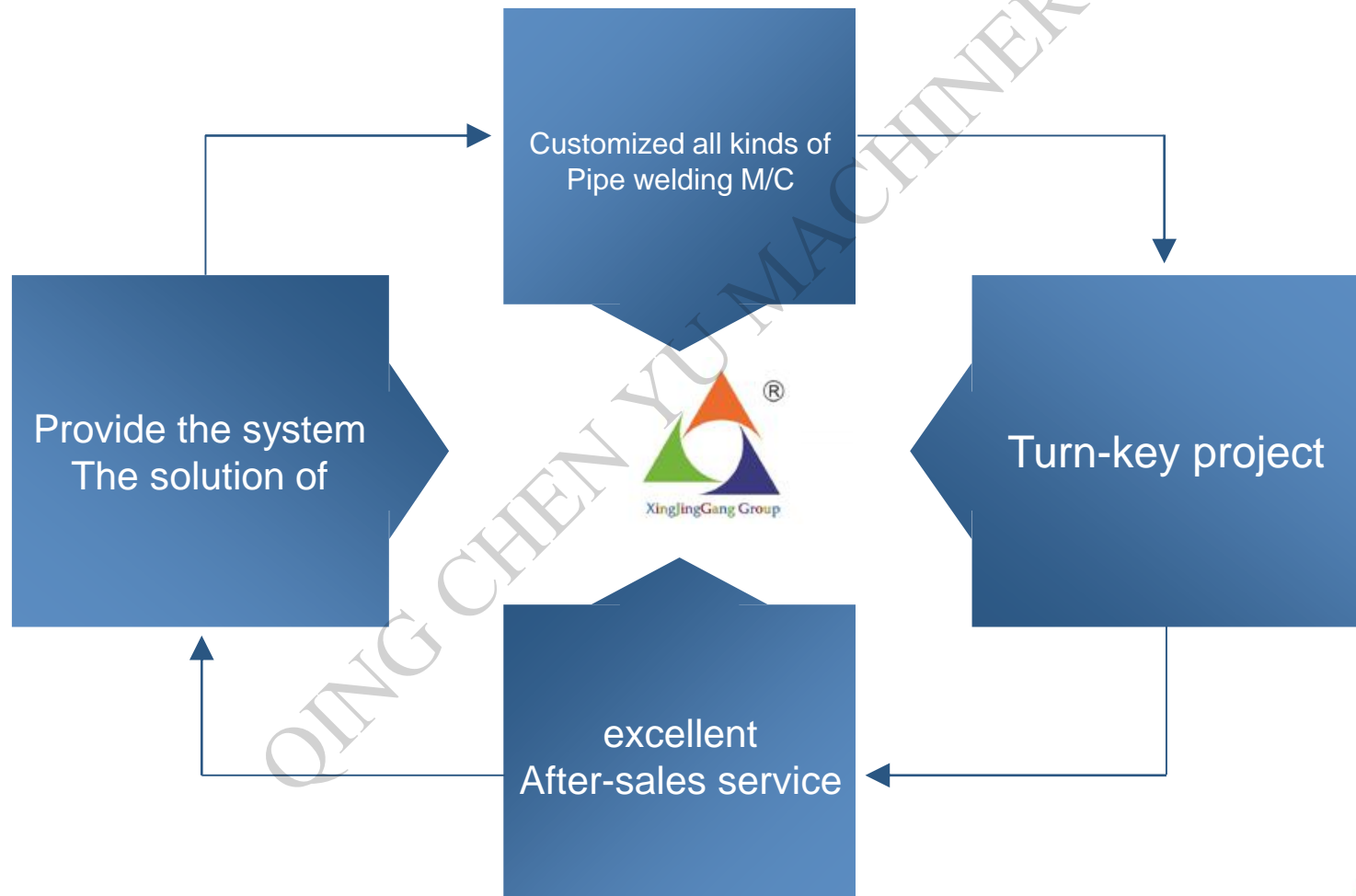
The user name	Sales device name
Wei star group (Singapore)	RHD1200mm Butt Welding Machine
YONGGAO Co., s (China)	RHJ630mm Pipe Fitting Machine
Green Pipes Ltd (Dubai)	RHD6300mm Butt Welding Machine
Sakthi Solutions & Services (Egypt)	RHD800mm Butt Welding Machine
Vuka Plastics & Fabrications (South Africa)	RHJ1000mm Pipe Fitting Machine
Sumit Minerals (India)	RHJ315mm Pipe Fitting Machine

QING CHEN YU MACHINERY

Professional Plastic Pipe Welding

Part of the cooperation supplier





QING CHEN YU MACHINERY

Professional Plastic Pipe Welding



Enterprise spirit:
Persistent struggle and innovation

Quality policy:
Excellent quality, perfect
The core idea:
Honest, casts the annuity weft



Thank you for your kind attention
If any further questions, feel free to contact me.
QING CHEN YU will be your powerful partner in
business !

Contact: Michael
Email : sales@xjgmachine.com
Cellphone: +86-139-622-92-365
Thank you !